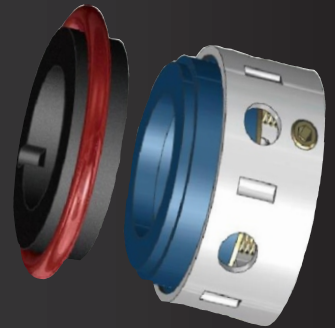




Teslor

Engineering LLP

Manufacturer & Exporter of mechanical seals, pump spares on a large scale



tesloengineering@gmail.com
www.tesloengineering.com

About us

Teslor Engineering is one of the leading manufacturer of industrial sealing solutions.

Our extensive portfolio includes everything from standard mechanical seals to complex customize designs.

Our challenges is to design seals that are able to withstand a wide range of media.

Every engineering seal has its own special requirement profile and so our job is to provide the best sealing solutions.

Our products provide one stop sealing solution for process industries including Oil & Gas, Petrochemicals, Refineries, Pharmaceuticals, Power generation, Chemicals, Pulp & Paper, Aerospace, Food processing, steel, Sugar industry, & more other major industries...

Aim

Our aim is to provide specific customer needs and to deliver value added services.

We provide customer satisfaction and loyalty for achieving the company mission.

Teslor engineering has expertise to understand your requirement and fulfil efficiently.

Service

Teslor engineering motto is "To deliver the best process engineering solutions & services on time, every time,

We provide expert engineers with technical experience of mechanical seals, rotating equipments, and support system.

We are committed to complete sealing solution and satisfaction to our clients..

Quality Control:

AT Teslor Engineering quality control involves monitoring & inspecting products throughout the production process to identify defects, deviations from specifications and opportunities for improvements.

Quality assurance measure helps in delivering products that meet or exceed customer expectations.

We ensure total commitment to quality excellence.

Manufacturing facility

Teslor engineering is equipped with modern manufacturing technologies and facilities, accompanying a team of qualified manpower, this proves to be the catalyst for converting our vision into reality..

Advance quality management system. Product testing facility. we also have our R&D section where research is an ongon process to offer more effective & energy saving products at most competitive price.



Teslor
Engineering LLP

www.teslorengineering.com

Industries:

Power Plant



Oil & Gas



Pulp & Paper industries



Pharma Industry



Airlines Industry



Marine Sector



Mining Industry



Food & Beverages



Product Categories

- Pusher Seals

- Bellow Seals

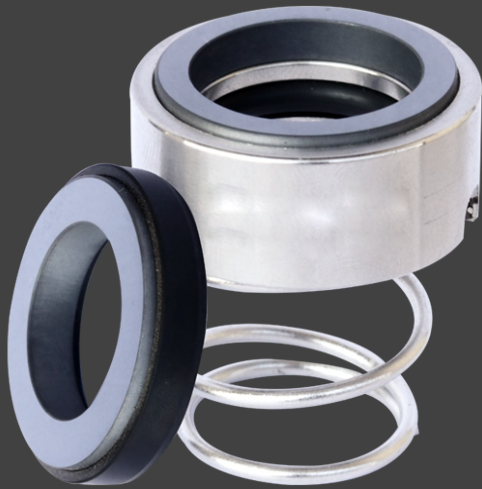
- Cartridge Seals

- Mixer Seals

- Pump Spares

- Thermosyphon

Connical spring Mechanical Seal



www.tesloengineering.com

Overview

We are biggest Exporter, Manufacturer, and Supplier of Conical Spring Mechanical Seal supplier in India. With the valuable assistance of skilled team of professionals, we are engaged in offering an extensive range of high-quality Conical Spring Mechanical Seals. The conical helical spring can be fitted easily by pushing on the shaft and twisting as the spring winding. So, the spring diameter enlarges easily to make easy fitting. One can judge the direction of the rotation from the drive end of the shaft.

Conical Spring Mechanical Seals are extremely rugged & reliable & therefore used in wide range of sealing applications. these seals have very few parts & hence can be easily assembled or dismantled. The seals arrangement does not warrant any modification even in case of conversion from gland packing. The compact design eliminates the requirement of extra radial & axial space for its installation.

Material of construction:

Seal Faces :

Carbon, Ceramic, GFT, CFT, SIC

Secondary Seal :

EPR, Viton, Silicon, TTV, PTFE, Nitrile

Metal Components :

SS 316, SS 304

Operating limits:

Shaft Dia 15mm to 75mm (0.625" to 3")

Pressure 8 bar

Temperature -20°C to 180°C

Shaft Speed 2900 RPM (max)

Characteristics:

Single Acting

Inside Mounted

Independent of Direction Rotation

Unbalanced

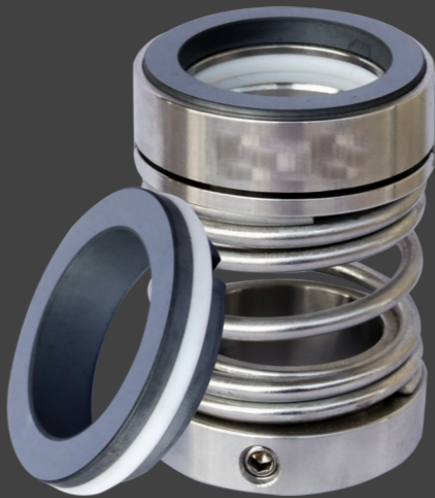
Applications:

Water Solvents

Clear Liquids

General Chemicals

Single spring Unbalance Mechanical Seal



www.tesloengineering.com

Overview

Using our big experience, Unbalanced Mechanical Seal is optimum quality products by offering Ronak Seals. The unbalanced seal is manufactured using preferable quality raw material and advanced techniques, under the guidance of skilled professionals. This product is widely used in water, oil, sugar and chemical industries. Our clients can purchase this product in various modified options within the stipulated time frame.

Single Spring Unbalance Mechanical Seals are single coil unbalanced mechanical seal, reliable and rugged enough for variety of application. special notches enhance the required driving torque and hence the seals is independent of direction of rotation. non clogging spring design enables these seals to be reliably used in situation involving corrosive, abrasive and viscous media. generally handle by high temperature pumps.

Material of construction:

Seal Faces :
Carbon, Sic, Ceramic, TC

Secondary Seal :
Viton, Nitrile, EPDM

Metal Components :
SS 316, SS 304

Operating limits:

Shaft Dia 20mm to 100mm (0.75" to 4")
Pressure 10 bar
Temperature -20°C to 280°C
Shaft Speed 2900 RMP (max)

Characteristics:

Single Acting
Inside Mounted
Independent of Direction Rotation
Unbalanced

Applications:

Petrochemicals
General Chemicals
Light Slurries
Vegetable Oils

Single spring Balance Mechanical Seal



www.tesloengineering.com

Overview

Single spring balanced mechanical seals series are internal mounted suitable for wide service applications. This type of seals is standard for using where corrosive liquid are being Processed. It is driven by drive ring or drive collar, rotary Joint manufacturer is driven by the motion transmitted by shaft to spring, seals are having easy fitment & pushed with drive ring or drive collar support. Construction of these Seal designs hold whole Rotary Parts together with the help of Snap Ring which is installation and removal is make easiest.

It is driven by drive ring or drive collar, rotary is driven by the motion transmitted by shaft to spring, seals are having easy fitment & pushed with drive ring or drive collar support. It is driven by drive ring or drive collar, rotary is driven by the motion transmitted by shaft to spring, seals are having easy fitment & pushed with drive ring or drive collar support.

Material of construction:

Seal Faces :

Carbon, Sic, Ceramic, TC

Secondary Seal :

Viton, Nitrile, EPDM, PTFE, Karlez

Metal Components :

SS 316, SS 304

Operating limits:

Shaft Dia 20mm to 100mm (0.5" to 4")

Pressure 20 bar

Temperature -20°C to 200°C

Shaft Speed 2900 RPM (max)

Characteristics:

Single Acting

Inside Mounted

Independent of Direction Rotation

Balanced

Applications:

Petrochemicals

General Chemicals

Light Slurries

Vegetable Oils

Multi spring Unbalanced Mechanical Seal



www.tesloengineering.com

Overview

Multi Spring Mechanical Seals can be used in various industries for different applications as per the requirement of the products such as single, back to back, face to face or tandem arrangement. Multi-Spring seals design has many springs put uniform force over the faces hence increase its life. Most of components are interchangeable, hence it proves economical and easy to maintain. Pusher Type Mechanical Seals are available in Un-balance design for low pressure and Balance design for high pressure applications. These Seals can be designed in Double configuration for toxic, hazardous, costly & volatile liquids.

Multiple Spring Unbalance Mechanical Seals seal are general purpose multi spring unbalance mechanical seals. These seal can be easily assemble or dismantled through circlip provided and can be change to balance version. These seal can be provided with single, double or tandem arrangement with external seal support system & devices.

Material of construction:

Seal Faces :

Carbon, Sic,TC

Secondary Seal :

EPR, Viton, Silicon, PTFE, Nitrile, Kalrez

Metal Components :

SS 316, SS 304, Hast-C, Alloy - 20

Operating limits:

Shaft Dia 20mm to 150mm (0.75" to 6")

Pressure 10 bar

Temperature -20°C to 180°C

Shaft Speed 2900 RPM (max)

Characteristics:

Single Acting

Inside Mounted

Independent of Direction Rotation

Unbalanced

Applications:

Petrochemicals

Clear Liquids

General Chemicals

Light Hydrocarbons

Multi spring Balanced Mechanical Seal



www.tesloengineering.com

Overview

Multi Spring Balance Mechanical Seals is specially designed for slurry applications which are being pumped high pressure. These products are extensively used for handling corrosive chemicals, hydrocarbons, general & light chemicals. Multiple spring design exerts uniform pressure on face and balanced primary ring makes it suitable for high pressure applications, Teflon, GFT, Viton, Kalrez, Nylon & Graphoil wedge in place of secondary seal ring. Options are available with wave spring seals.

Multi Spring Balance Mechanical Seals are pusher type balance multiple spring mechanical seals generally used where high pressure sealing required, due to its compact radial and axial dimensions these seals required lower stuffing box space for installation, this seals can be provided with single, double, or tandem arrangement with external seals support systems and devices.

Material of construction:

Seal Faces :
Carbon, Sic, Ceramic, TC

Secondary Seal :
EPR, Viton, Silicon, PTFE, Nitrile, Kalrez

Metal Components :
SS 316, SS 304, Hast-C, Alloy - 20

Operating limits:

Shaft Dia 20mm to 150mm (0.75" to 6")
Pressure 25 bar
Temperature -20°C to 200°C
Shaft Speed 2900 RMP (max)

Characteristics:

Single Acting
Inside Mounted
Independent of Direction Rotation
Balanced

Applications:

Petrochemicals
Clear Liquids
General Chemicals
Light Hydrocarbons

Rubber Bellow Mechanical Seal



www.tesloengineering.com

Overview

We are offering type of rubber bellow seals which is widely used in centrifugal pumps and rotating Equipment. These Rubber Bellow Mechanical Seal are highly used in water transfer Applications. Mechanical seals are simply another means of controlling leakage of process where other means are deemed to be less capable of performing the task adequately.

Rubber Bellow Seals are mainly use in waste water treatment plants for the sewage applications. Due to its compact design it can be easily mounted. It has a unique rubber bellow secondary seal, which provides a high degree of axial flexibility and protects the shaft sleeves from fretting. Rubber Bellow Mechanical Seals can be use regardless of direction of rotation since the driving torque is not transmitted through the coil spring. The required driving torque is through the spring and spring holder. The single coil spring will avoid effluent particle.

Material of construction:

Seal Faces :
Carbon, Sic, Ceramic, TC

Secondary Seal :
Viton, Nitrile, EPDM

Metal Components :
SS 316, SS 304

Operating limits:

Shaft Dia 12mm to 100mm (0.5" to 4")
Pressure 10 bar
Temperature -20°C to 100°C
Shaft Speed 2900 RPM (Max)

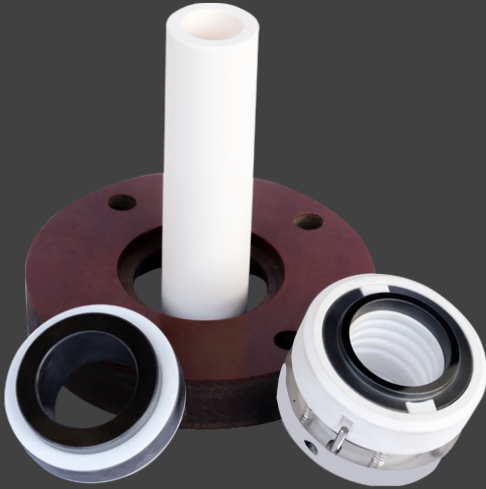
Characteristics:

Single Acting
Inside Mounted
Independent of Direction Rotation
Unbalanced

Applications:

Water
Oil
Domestic
Agri
Coolant Pumps

Teflon Bellow Mechanical Seal



www.tesloengineering.com

Overview

Teflon Bellow Mechanical Seals Design Faces are molded with Glass Filled PTFE with Highly Flexible, easy checkout method function and cleaning possibility as this Mechanical Seal located simply accessible outside the pump. Teslor Engineering manufacture both the teflon bellow mechanical seals or the ptfе bellows mechanical seals with very best quality. The ptfе bellows seal or teflon bellow seal are simple to install and remove.

Teflon Bellow Mechanical Seals are Teflon Bellow seals designed to handle highly corrosive liquids. These mechanical seals are outside mounted with impel installation procedure and hence cost effective for corrosive media sealing. These has designated as Fixed & replaceable bellow face respectively. For replaceable version there is flexibility for selection of face material as perthg) media to sealed, which can be easily removed & replaced & is highly desirable in severe application

Material of construction:

Seal Faces :
Carbon, Ceramic, GFT, CFT, SI^C

Secondary Seal :
PTFE(Teflon) Bellow

Metal Components :
SS 316, SS 304

Operating limits:

Shaft Dia 25mm to 100mm (1" to 4")
Pressure 5 bar
Temperature -20°C to 100°C
Shaft Speed 2900 RPM (max)

Characteristics:

Single Acting
Out Side Mounted
Independent if Direction Rotation
Reverse Balance

Applications:

Corrosive Liquids
Sulphuric
Hydro Chloric
Nitric
Phosphoric Acids

Metal Bellow Mechanical Seal



www.tesloengineering.com

Overview

Teslor Engineering are one of the highest metal bellow mechanical seal manufacturers, manufacturing best metal bellow mechanical seal and supplier metal bellow seal design. Exciting one of the top most metal bellow seal Provider, manufacturer and exporter of the multiple types of mechanical seals, we supply the metal bellow seal manufactured and designed of very high quality raw materials.

Metal Bellow Mechanical Seals is inherently balanced metal bellow mechanical seal. This seals are independent of direction of rotation. The unique feature of this type of seal is that, there is no dynamic 'O' rings and therefore it will never hang-up or damage the shaft and sleeve, it also has an ability to handle corrosive as well as abrasive & viscous media. These seals have self-cleaning & nonblocking construction. With selection of special bellow material it can be used in highly corrosive me

Material of construction:

Seal Faces :
Carbon, Sic, TC

Secondary Seal :
Grafoil, Kalrez

Metal Components :
SS 316, Hast-C, AM-350, C42

Operating limits:

Shaft Dia 20mm to 100mm (0.75" to 4")
Pressure 15 bar
Temperature -20°C to 350°C
Shaft Speed 2900 RPM (Max)

Characteristics:

Single Acting
Inside Mounted
Independent of Direction Rotation
Inherently Balanced
Welded Metal Bellows

Applications:

Petro & Gen Chemicals
Thermic Fluid
Veg Oils
Hydrocarbons
Light Slurries
Hot Oil

Wave Spring Mechanical Seal



www.tesloengineering.com

Overview

We are a leading organization, which is engaged in manufacturing and exporting a wider range of Wave Spring Seal. The offered range is known to offer services which are reliable due to its attributes such as rigid construction, high-efficiency, compact design and long working life. Fabricated using superior-grade raw-material, this range is made in strict accordance with the industry laid norms & guidelines.

Wave Spring Seals are designed for bi-directional use and work with highly viscous, abrasive media, water, oils, fuels, light aggressive chemical substances and liquids containing solid particles. Most of the components are interchangeable, hence it proves economical and easy to maintain. All components are held together by snap ring which helps in easier installation and removal.

Material of construction:

Seal Faces :
Carbon, Sic, Ceramic, TC

Secondary Seal :
EPR, Viton, Silicon, PTFE, Nitrile

Metal Components :
SS 316, SS 304

Operating limits:

Shaft Dia 20mm to 100mm (0.75" to 4")
Pressure 10 bar
Temperature -20°C to 200°C
Shaft Speed 2900 RPM (max)

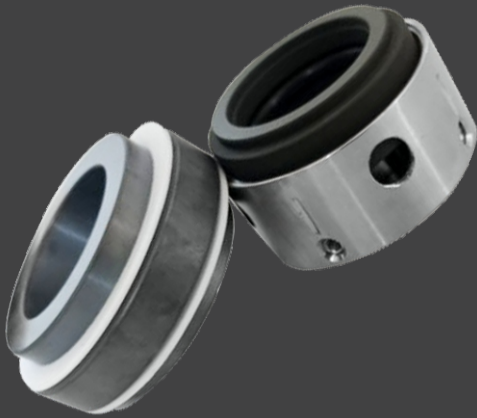
Characteristics:

Single Acting
Independent of Direction Rotation
Inside Mounted
Unbalanced

Applications:

Water Solvents
General Chemicals
Clear Liquids

Reverse balance Outside mounted Mechanical Seal



www.tesloengineering.com

Overview

We are engaged in offering an assortment of Reverse Balanced Outside Mounted Mechanical Seal. The offered range find its applications in various industries such as chemical, refinery, petrochemical and pharmaceutical. These seal can be easily assemble or dismantled through cir-clip provided and can be change to balance version. Witch can be provided with single, double or tandem arrangement with external seal support system & devices.

Reverse Balanced Outside Mounted Mechanical Seal are externally mounted internally balanced multiple spring seals. the unique feature of this type of seals is that, it eliminated the shaft step or sleeves for balancing. these seals are externally mounted and hence the metal parts including the spring do not come in contact with the surculating media and therefor can be used for corrosive or abrasive media sealing. the compact design eliminates the requirement of extra radial and axial space for its installation.

Material of construction:

Seal Faces :
Carbon, Sic, Ceramic, TC

Secondary Seal :
EPR, Viton, Silicon, PTFE, Nitrile, Karlez

Metal Components :
SS 316, SS 304

Operating limits:

Shaft Dia 20mm to 100mm (0.75" to 6")
Pressure 0 to 20 bar
Temperature -20°C to 150°C
Shaft Speed 2900 RPM (max)

Characteristics:

Single Mechanical
Outside Mounted
Reverse Balanced Seal
Independent of Direction Rotation

Applications:

Black Liquor
Salt Slurries
Corrosive Chemicals

Spring Out of contact Mechanical Seal



www.tesloengineering.com

Overview

Offering a variegated line of Seal , which is made at par with the international standards. We designed these seals using sophisticated technology for gear pumps. These can bear pressure up to 20 bars and temperature up to 200°C. Our clients can avail these seals at most competitive prices.

Material of construction:

Seal Faces :
Carbon, Sic, Ceramic, TC

Secondary Seal :
EPR, Viton, Silicon, PTFE, Nitrile, Karlez

Metal Components :
SS 316, SS 304, Hast-C, Alloy-20

Operating limits:

Shaft Dia 20mm to 100mm (0.75" to 4")
Pressure 20 bar
Temperature -20°C to 200°C
Shaft Speed 2900 RPM (max)

Characteristics:

Single Acting
Spring Out of Contact
Inside Mounted
Hydraulically Balanced Seal Face

Applications:

Petrochemicals
General Chemicals
Light Hydrocarbons

Single Cartridge Mechanical Seal



www.tesloengineering.com

Overview

These seals are independent of direction of rotation, pre assembled cartridge unit easy to install with different PCD's pumps due to slots provided on gland plate and these seals can be offered in balanced and unbalanced configuration. A common seal head/mating ring set, utilized throughout all versions, is reversible to allow rotating. Seat/mating ring or rotating seal head operation, and is interchangeable with metal bellows seal heads. Seal has an optional quench gland with carbon ring throttle bushing.

Single Cartridge Mechanical Seals are used where there is corrosion and erosion in the seal media. This seal have good demand in sealing of rotation equipment. Single Cartridge seal are special purpose multi spring balance mechanical seals designees for use in abrasive or solid media.

Material of construction:

Seal Faces :
Carbon, Sic, Ceramic, TC

Secondary Seal :
EPR, Viton, Silicon, PTFE, Nitrile, Kalrez

Metal Components :
SS 316, SS 304, Monel, Alloy - 20, Hastelloy - C

Operating limits:

Shaft Dia 20mm to 100mm (0.75" to 4")
Pressure 10 to 25 bar
Temperature -20°C to 200°C
Shaft Speed 2900 RPM (max)

Characteristics:

Cartridge Balance & Unbalance
Easy Installation
Inside Mounted Design

Applications:

Water Solvents
Power
Pharmaceutical
Light hydrocarbon
Clear Liquids

Double Cartridge Mechanical Seal



www.tesloengineering.com

Overview

Double Cartridge Seal are Recommended for Clean and dirty media application Seal can tolerate reversal pressure. Double Cartridge Seal is Standard for using where Corrosive Liquid are being Processed. These seals are independent of direction of rotation, pre assembled cartridge unit easy to install with different PCD's pumps due to slots provided on gland plate and these seals can be offered in balanced and unbalanced configuration. Teslor Engineering are the top manufacturer of Double Cartridge Seal in INDIA.

Double Cartridge Mechanical Seals are self cartridge units consisting of a shaft, sleeve, seal and gland plate. The unit is fitted on to the pump shaft as a built assembly, and no further fitting is required. They are supplied with various tapings to provide for flushing, cooling water injection and disaster control. The setting position of the seal is set by the cartridge design but the seal unit should not be screwed to the shaft.

Material of construction:

Seal Faces :
Carbon, Sic, Ceramic, TC

Secondary Seal :
EPR, Viton, Silicon, PTFE, Nitrile, Kalrez

Metal Components :
SS 316, SS 304, Hast-C, Alloy-20

Operating limits:

Shaft Dia 20mm to 100mm (0.75" to 4")
Pressure 12 bar
Temperature -20°C to 200°C
Shaft Speed 2900 RMP (max)

Characteristics:

Cartridge Dual Balance & Unbalance Design
Inside Mounted
Easy Installation

Applications:

Water Solvents
Power
General Chemicals
Pharmaceutical
Light hydrocarbon
Clear Liquids

Single Dry

Mechanical Seal



www.tesloengineering.com

Overview

We are considered as the trustworthy manufacturer, supplier and exporter of the Dry Mechanical Seals. Mechanical Seals are designed for Top, Bottom and Side Entry Drives in Agitators, Mixers OR Blenders and where Non-Aggressive and Non-Hazardous Media are Sealed with the use of Cooling Liquid preventing against Dry Running. Construction of MOC designed of these Seals purpose of holding whole Rotary Parts together with the help of Snap Rings which eases while Installation and Removal of Seals.

Dry Mechanical Seals are outside mounted balanced mechanical seal, which require no shaft or sleeve step for balancing seal shows good performance in high vacuum conditions. Since no auxiliary equipment's are needed for installation, it is very cost effective & economical. These seal can be easily installed & repaired on the field to minimized replacements costs & downtime.

Material of construction:

Seal Faces :
Carbon, Sic, Ceramic, TC

Secondary Seal :
EPR, Viton, Silicon, PTFE, Nitrile, Kalrez

Metal Components :
SS 316, SS 304, Monel, Alloy-20, Hastelloy-C

Operating limits:

Shaft Dia 15mm to 150mm
Pressure F.V to 1.3 bar
Temperature -20°C to 150°C
Shaft Speed Up to 250 RPM

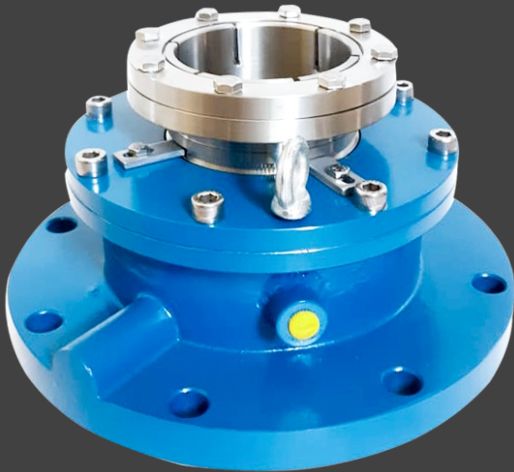
Characteristics:

Single Acting Seal
Reverse Balanced
Independent & Direction of Rotation
Outside Mounted
Dry Running

Applications:

Solvent
Pharmaceuticals

Single agitator Mechanical Seal



www.tesloengineering.com

Overview

Teslor Engineering exporting and supplying the best quality of Agitator Single Mechanical Seal. This seal is precisely manufactured with high precision by utilizing paramount quality raw materials and contemporary techniques in tune with the international quality standards. The offered seal finds application in agitator for providing air tight sealing. Furthermore, our patrons can purchase this Agitator Single Mechanical Seal in varied sizes and finishes at highly competitive prices from us.

These Agitator Single Mechanical Seals are basically used on top entry agitators as dry running seals. In beverage and pharma bulk drugs companies mixing of any other liquid will contaminate the product & affect it's quality hence these Agitator Single Seals are used.

Material of construction:

Seal Faces :
Carbon, Sic, Ceramic, TC

Secondary Seal :
EPR, Viton, Silicon, PTFE, Nitrile, Kalrez

Metal Components :
SS 316, SS 304, Hast-C, Alloy-20

Operating limits:

Shaft Dia 25mm to 150mm (0.1" to 6")
Pressure F.V to 10 bar
Temperature -20°C to 180°C
Shaft Speed 200 RPM (max)

Characteristics:

Single Dry Mechanical Outside Mounted Seal
Independent of Direction Rotation
Reverse Balanced

Applications:

Petrochemicals and its vapours
Light Hydrocarbons and its vapours
Petrochemicals and its vapours

Double agitator Mechanical Seal



www.tesloengineering.com

Overview

Agitator Double Mechanical Seals, used for glass-lined, steel, agitators, mixers and vessels. The construction of seal slightly changes for top entry, side entry, and bottom entry vessels. The design incorporates bearing located very close to the seal. These seals are supplied with a cooling jacket, to maintain cool environment around the seal. The Large clearance between shaft / sleeve and mating ring permits higher deflection of the shaft.

Teslor Engineering are a remarkable organization, engaged in manufacturing, exporting and supplying a superior quality assortment of Agitator Double Mechanical Seal. The offered seal is widely used in chemical, petrochemical, food processing and pharmaceutical industries. Our dexterous professionals manufacture this seal with the use of paramount quality raw materials and the pioneering techniques at our highly advanced manufacturing unit. Furthermore, clients can easily avail this Agitator Double Mechanical Seal at nominal rates from us.

Material of construction:

Seal Faces :
Carbon, Sic, TC

Secondary Seal :
Grafoil, Kalrez, TTV, PTFE, Viton

Metal Components :
SS 316, SS 304, Hast-C, Alloy-20

Operating limits:

Shaft Dia 25mm to 150mm (0.1" to 6")
Pressure F.V to 30 bar
Temperature -20°C to 250°C
Shaft Speed Up to 200 RPM

Characteristics:

Double Acting Back to back seals
Independent of Direction Rotation
Unbalanced
Cartridge Unit
Operated with pressurized barrier fluid

Applications:

Petrochemicals and its vapours
Light Hydrocarbons and its vapours
Petrochemicals and its vapours

Thermosyphon



www.tesloengineering.com

Overview

A thermosyphon pot is a reservoir of either in carbon steel or stainless steel. The capacity of the reservoir is generally 10 liters at normal liquid level (NILL). It can be equipped with or without cooling coil. It is provided with hand pump for the make up of buffer or barrier liquid loss. Ports are available at the top top dish end for connections of pressure gauge, pressure switch and level switch. Standard thermosyphon pot is available with weld type lever gauge.

Objective

1. Thermosyphon Pot is used in double mechanical seals so as to supply external barrier liquid which eliminated the leakage of hazardous process liquid into atmosphere.
2. Due to convection current, thermosyphon pots used in double seals are used to take away the heat generated across the faces.
3. Thermosyphon Pots used in double seats with unpressurised buffer liquid acts as a quenching device which dissolve the solids particles when inner seal liquid leaks into the outer seals chamber.

Advantages

Elimination of hazardous process liquid leakage.
Better lubrication for the outer seals preventing dry-running.
Process liquids which tends to solidify or icing can mix with buffer liquid in tandem arrangement.
Leakage can be compensated using hand pump.
Acts as a coolant for the outer seals.
Easily mounted on support and easily accessible for maintenance.

Application

Equipped with cooling coils with cooling water on coil side which takes away away the heat generated by seal faces.

Works on the principle of convection heat transfer method wherein the hot liquid rises up and cold liquid settles down.

Available with vent port to remove any entrapped gases from the system.

Fitted with hand - pump for the make up of buffer / barrier liquid leakage.

Optional feature for pressure switch and level switch for monitoring of seal leakage.

Available with ill connection & Nitrogen pressurizing port.

Weld-pad level gauge with borosilicate slight glass can be used for visual monitoring of liquid level in thermosyphon pot.

Can be mounted easily on stands with the help of mounting bracket welded on thermosyphon pots.

With seamless design, thermosyphon pots can be used upto 40 bar pressure and temperature upto 200°C.



Teslor
Engineering LLP

Office:

Level 2.87no, Dewan Center,
near Jogeshwari west railway stn,
Mumbai:400102
India

Manufacturing Unit:

Gujarat.

Contact no.

+91 9987000193
+91 9821700233
+91 7977236479
+91 8356956550

Email:

tesloengineering@gmail.com
sales@tesloengineering.in

Website.

www.tesloengineering.com

SOCIAL LINK.

